



ADVANCED FOAM MASKING TAPE

An innovative foam tape for masking all vehicle gaps. Adjustable to required depth. Prevents hard paint edges.

Advanced Foam Masking Tape

PART NO:	SIZE:	UNITS:
1011.2050	20mm x 50m	1



FEATURES

A unique, adjustable and efficient way to mask cars for paint and lacquer.

BENEFITS

- For use in all apertures, A, B and C posts
- Precise fingertip adjustment
- Removes post spraying rub down
- Can be used on moving parts
- One continuous length
- More absorbent



Dominion Sure Seal Ltd, 6175 Danville Road, Mississauga, ON, L5T 2H7
Tel: 1-800-265-0790 Fax: 905-670-5174 www.dominionsureseal.com

HOW TO USE THIS PRODUCT:



1. Choose aperture to be masked.



2. Apply tape behind the door edge taking care to place the adhesive behind the panel. Leave the adhesive free portion extending beyond the door edge.



3. Close the door. Adjust the tape into the gap to the required length.



4. Prepare the vehicle to be painted.



5. Once the paint is dry, remove all the masking materials.



6. Once the tape is removed. Inspect edges and polish if necessary. The result: no extra rework.



CLEAR LOGO TAPE

For professional re-application of vehicle decals. Reduces costs and speeds up the reclaim process. 10 sheets per sleeve.

PART NO:	SIZE:	UNITS:
2210.5030	50mm x 300mm	10



Clear Logo Tape

FEATURES

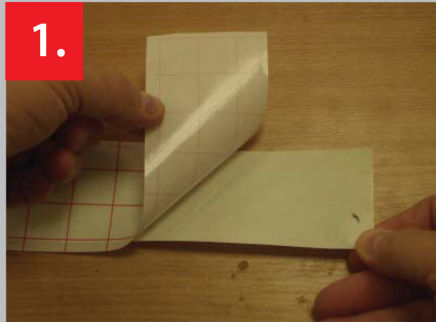
An ideal way reclaim automotive badges and logos without the need for expensive replacements.

BENEFITS

- Self-cutting
- Easy to use
- Premium adhesive
- Saves time and money during the badge reclaim process



HOW TO USE THIS PRODUCT:



1. Peel backing strip off to expose the adhesive.



2. Place the badge onto the adhesive face. Apply pressure evenly onto the badge and on the back.



3. Lift the badge off taking the adhesive with it.



4. Clean the area where the badge is to be applied to. Apply the badge to the vehicle. Ensure that care is taken to make sure that you have the badge in the correct position.

Clear Logo Tape



Dominion Sure Seal Ltd, 6175 Danville Road, Mississauga, ON, L5T 2H7
Tel: 1-800-265-0790 Fax: 905-670-5174 www.dominionsureseal.com

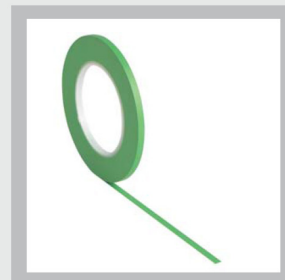
FINE LINE MASKING TAPE

Masking for multi-colour and design paint jobs. A range of rigid to flexible tapes, all designed for different purposes. All temperature resistant over 132°C/270°F

Fine Line Tape Green

Highly flexible tape for multi-colour and design paint jobs. Easy to curve. Temperature resistant up to 132°C/270°F.

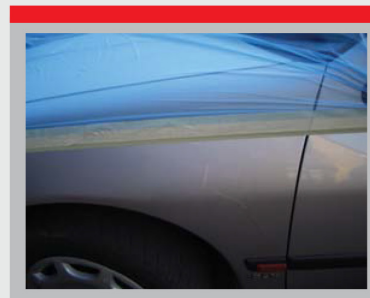
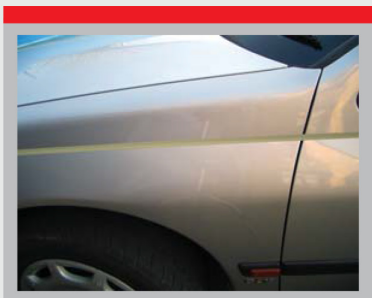
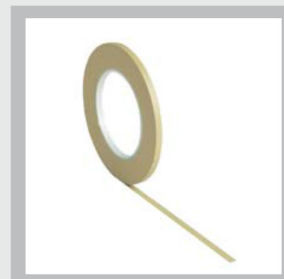
PART NO:	SIZE:	UNITS:
1105.0355	3mm x 55m	10
1105.0655	6mm x 55m	10
1105.0955	9mm x 55m	10
1105.1255	12mm x 55m	10



Fine Line Tape Olive

Rigid tape for multi-colour and design paint jobs. Designed for straight line use. Temperature resistant up to 138°C/280°F.

PART NO:	SIZE:	UNITS:
1109.0355	3mm x 55m	10
1109.0655	6mm x 55m	10
1109.0955	9mm x 55m	10
1109.1255	12mm x 55m	10

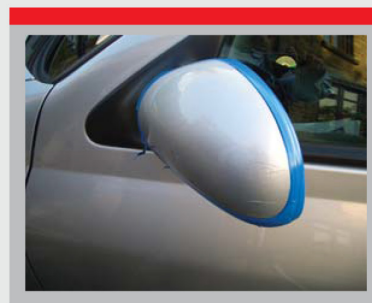
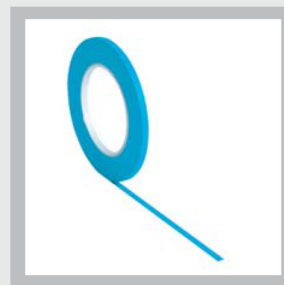


Fine Line Masking Tape

Fine Line Tape Blue

Masking tape for multi-colour and design paint jobs. Medium flexibility. Temperature resistant up to 138°C/280°F.

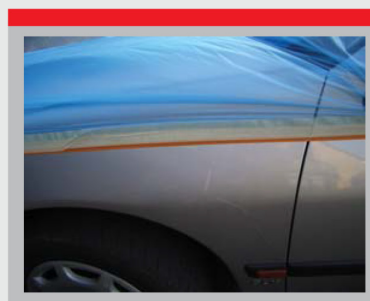
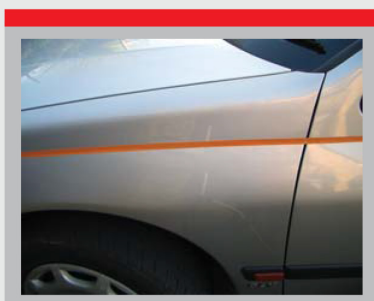
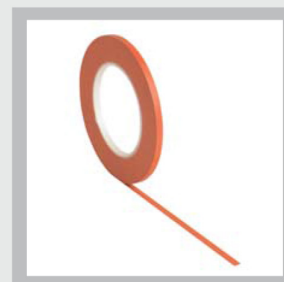
PART NO:	SIZE:	UNITS:
1110.0333	3mm x 33m	10
1110.0633	6mm x 33m	10
1110.0933	9mm x 33m	10
1110.1233	12mm x 33m	10



Fine Line Tape Orange

Masking tape for multi-colour and design paint jobs. Designed for long straight lines whilst remaining flexible. Temperature resistant up to 150°C/302°F.

PART NO:	SIZE:	UNITS:
1111.0355	3mm x 55m	10
1111.0655	6mm x 55m	10
1111.0955	9mm x 55m	10
1111.1255	12mm x 55m	10



NO EDGE BLENDING TAPE

The fast and sure way to mask panel edges and swage lines. Eliminates unnecessary re-work due to unwanted hard painted edges.

No Edge Blending Tape

PART NO:	SIZE:	UNITS:
1012.2005	20mm x 5m	10
1012.2025	20mm x 25m	1



FEATURES

The fast and sure way to mask swage lines and panel edges to avoid hard paint edges. Eliminates unnecessary rework due to unwanted paint edges.

BENEFITS

- Seamless blending from old to new paintwork
- Ideal for body swage lines
- No paint edges
- Non stretch
- Just one size for every occasion
- More absorbent
- Available in a multiple roll dispensing box



No Edge Blending Tape

HOW TO USE THIS PRODUCT:



1. Choose the swage line to blend up to.



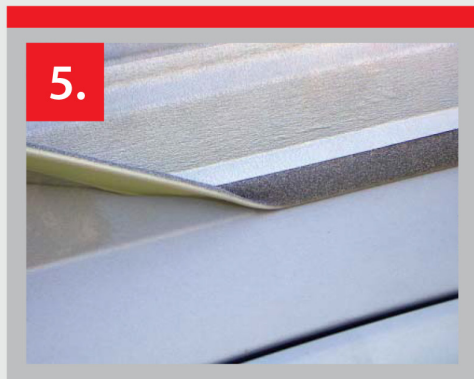
2. Apply the tape onto the panel next to the swage line ensuring that the tape edge is level with the panel bend. Then mask the rest of the vehicle.



3. After masking, spray the panel as normal.



4. Ensure that the paintwork is dry before de-masking.



5. Remove the masking material exposing a seamless transition.



6. This will now result in a seamless transition between old and new paintwork along the swage line edge - avoiding any unnecessary rework.



Dominion Sure Seal Ltd, 6175 Danville Road, Mississauga, ON, L5T 2H7
Tel: 1-800-265-0790 Fax: 905-670-5174 www.dominionsureseal.com



PERFORATED TRIM MASKING TAPE

Protects rubber trims and bodyside mouldings during spraying. Perforated for easy tear off and flexible to follow contours and tight curves.

PART NO:	SIZE:	UNITS:
1055.5010	50mm x 10m	10

Perforated Trim Masking Tape



FEATURES

Protects rubber trims and bodyside mouldings during spraying. Perforated for easy tear off and flexible to follow contours and tight curves.

BENEFITS

- Pre-perforated for easy tear
- Linerless
- Easy lifting tab
- One size fits all

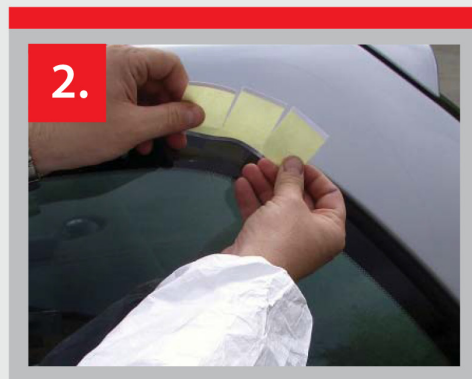


Dominion Sure Seal Ltd, 6175 Danville Road, Mississauga, ON, L5T 2H7
Tel: 1-800-265-0790 Fax: 905-670-5174 www.dominionsureseal.com

HOW TO USE THIS PRODUCT:



1. Choose area to be masked



2. Tear off a small section to mask a tight corner and tear the tape down to the plastic section. Then slide inbetween the rubber trim and bodywork.



3. To mask along a straight section, tear off a section no longer than 20cm, slide in and leaver back the trim ensuring it overlaps the last piece.



4. Mask as normal and paint.



5. Allow paint to dry and remove all the masking materials.



6. Check edges and polish if necessary.



PRIME & PAINT FOAM MASKING TAPE

The ultimate 2-in-1 solution for masking vehicles throughout the priming and painting process

Prime & Paint Foam Masking Tape

PART NO:	SIZE:	UNITS:
1016.3530	35mm x 30m	1



FEATURES

- Unique 2 in 1 masking product
- Hidden adhesive
- Patented design
- Detachable primeshield piece
- Handy dispensable box

BENEFITS

- No need to de-mask & re-mask between priming and painting
- Prevents hard primer/groundcoat edges
- Dramatic time savings
- Premium adhesive leaving no residue
- Easily removable
- Simple & easy to use
- One step process



HOW TO USE THIS PRODUCT:



1. Attach the product to the moving part by just hiding the adhesive.



2. Adjust the product back into the gap so that the small piece without the adhesive is sitting on the panel.



3. Prime the panel and then pull the outer piece away from the panel to expose the unprimed material below.



4. Remove the outer piece tearing along the length.



5. Adjust the material back into the gap ready for painting.



6. Paint as per normal.



PRIMESHIELD

A fast and efficient way to mask door apertures and other vehicle gaps making previously unmaskable gaps simple and easy to protect.

PART NO:	SIZE:	UNITS:
1015.1535	15mm x 35m	1
1015.2225	22mm x 25m	1



Primeshield

FEATURES

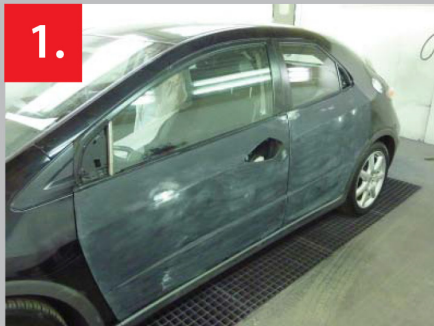
A fast and efficient way to mask door apertures and other vehicle gaps making previously unmaskable gaps simple and easy to protect.

BENEFITS

- Dramatically reduces process times
- Seals and protects from overspray
- Precise fingertip adjustment
- Easy to apply – self locating
- No primer build up on panel edges
- Reduces material use



HOW TO USE THIS PRODUCT:



1. Prepare the vehicle before masking.



2. Apply the tape in the gap smaller side first. Locate the tape in the gap so that it sits in the central groove.



3. Check to ensure the tape is firmly located in all the gaps.



4. Prepare the vehicle to be painted.



5. Prime the desired areas.



6. Remove the tape before baking.

Primeshield



Dominion Sure Seal Ltd, 6175 Danville Road, Mississauga, ON, L5T 2H7
Tel: 1-800-265-0790 Fax: 905-670-5174 www.dominionsureseal.com

SMOOTH EDGE FOAM MASKING TAPE

A simple way to mask your car and protect the interior. Reduces levels of hard paint edges.

Smooth Edge Foam Masking Tape

PART NO:	SIZE:	UNITS:
1013.1350	13mm x 50m	1
1013.1935	19mm x 35m	1



FEATURES

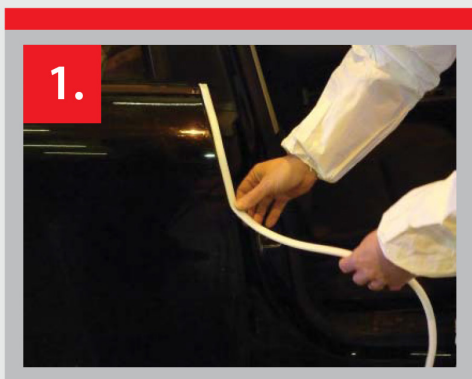
- A simple way to mask your car and protect the interior
- Supplied in multiple strips of 5 metre lengths
- Available in 13mm & 19 mm
- Dispensing box

BENEFITS

- For use on B and C apertures
- Reduces levels of hard paint edges
- More absorbent
- Clean removal adhesive



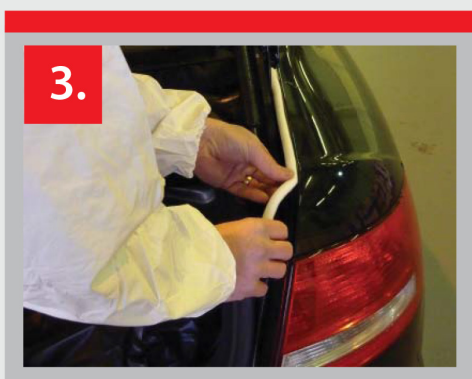
WHERE TO USE THIS PRODUCT:



For use on vehicle B post



For use on vehicle C post



For use on vehicle boot



For use on vehicle bonnet

